

Decentralized data logger ASi-INSpektor®

Function

The **ASi-INSpektor®** is a passive data logger that analyses the telegram traffic of ASi networks for events, such as

- error telegrams,
- repeat telegrams,
- package error
- device diagnosis and
- device failures.

This information reflects the current status of the communication quality in ASi networks. All collected network data can be retrieved according to Ethernet using an integrated web interface.

Technical data

- Voltage supply: 24 VDC
- ASi-Bus
 - Connection: terminal
- Ethernet
 - Baud rate: 100BASETX / 10 Mbps
 - Connection: RJ45

General data

- Installation: 35 mm DIN top-hat rail
- Dimensions (H x B x T): 105 x 23 x 111 mm
ASi-INSpektor®
- Dimensions (H x B x T): 105 x 23 x 111 mm
ASi-INSpektor with Switch and Pure-box
- Industrial protection: IP20
- Ambient temperature: 0 °C to 55 °C
- Storage temperature: -25 °C to 85 °C

Scope of delivery StarterKIT

- ASi-INSpektor®
- M12 cable to ASi-BUS
- ASiMA (ASi-Messadapter M12)
- Patch cable
- Switch for ASi-INSpektor®
- Pure-box to provide the ASi-INSpektor® web interface
- User manual

Ordering details

Art. No.

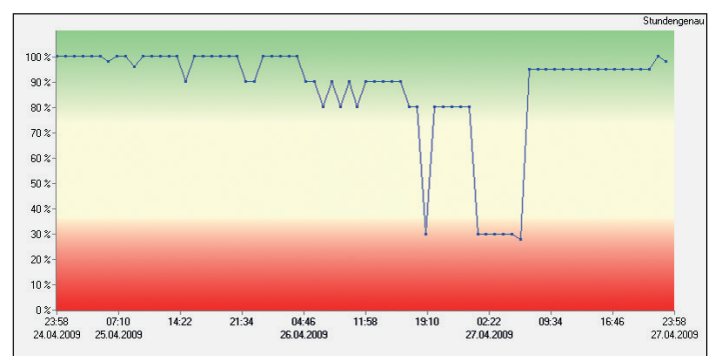
ASi-INSpektor®	124040000
StarterKIT ASi-INSpektor®	124040002
Active measuring point ASiMA IP67	120040000
M12 cable	120010003
Ethernet patch cable	124080003
Ethernet patch cable crossover	124080002



ASi-INSpektor® with Webinterface (StarterKIT)

Mögliche Zustände						
Inaktiv	OK	Ereignis / Diagnose	Ausfall / Neuanlauf	Vorhanden, nicht projektiert		
3	4	5	6	7	8	9
Device 3 Location 3	Device 4 Location 4	Device 5 Location 5	Device 6 Location 6	Device 7 Location 7	Device 8 Location 8	Device 9 Location 9
Device 13 Location 13	Device 14 Location 14	Device 15 Location 15	Device 16 Location 16	Device 17 Location 17	Device 18 Location 18	Device 19 Location 19
Device 23 Location 23	Device 24 Location 24	Device 25 Location 25	Device 26 Location 26	Device 27 Location 27	Device 28 Location 28	Device 29 Location 29

Device list ASi-INSpektor®



Network status ASi in PROmanage® NT